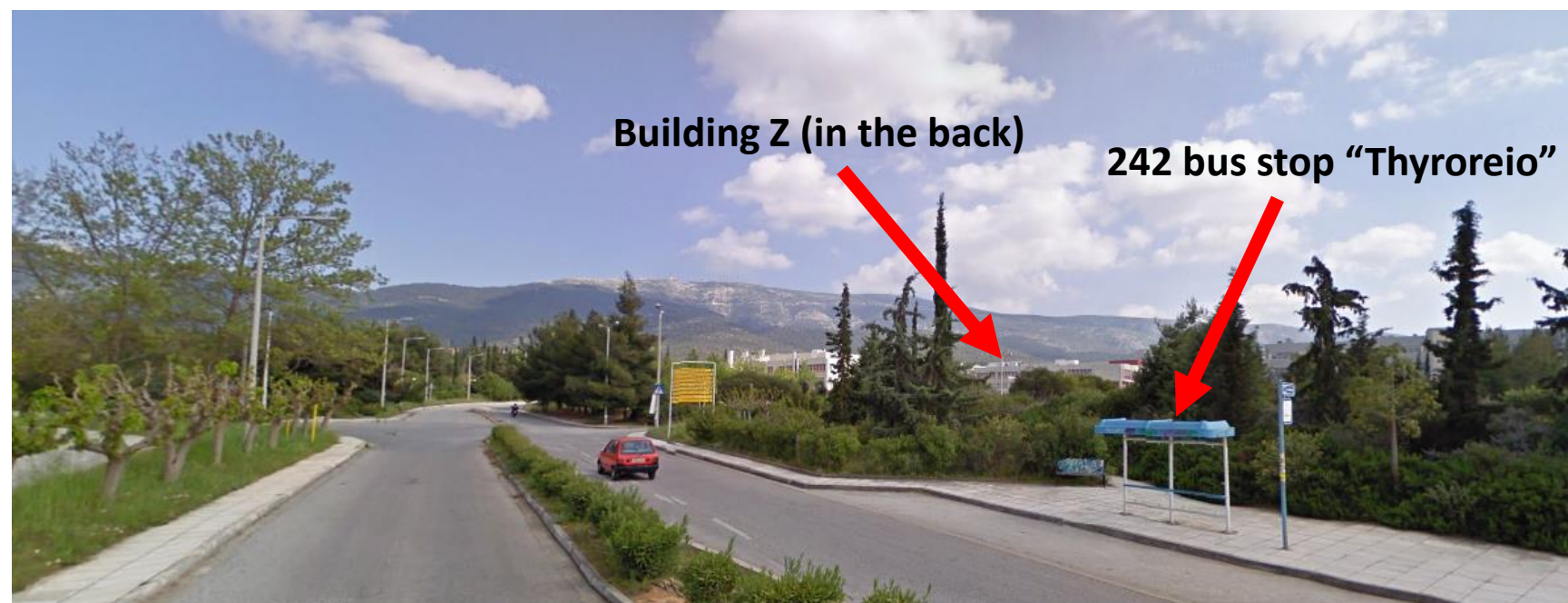


## Directions to NTUA Campus, Zografou

- From Syntagma square take the Blue metro line (line 3), direction to Doukissis Plakentias / Airport
- Get off at “Katehaki” station (about 10 minutes)
- Go out the exit and cross the Katehaki avenue to the bus stop ([http://telematics.oasa.gr/en/#stationInfo\\_61329](http://telematics.oasa.gr/en/#stationInfo_61329))
  
- **Alternative 1:** Take bus number 242 (line information available at: <http://telematics.oasa.gr>)
- Get off at the “Thyroreio” bus stop (first bus stop after the bus crosses the Kokkinopoulou Str. Gate of the NTUA Campus ([http://telematics.oasa.gr/en/#stationInfo\\_200002](http://telematics.oasa.gr/en/#stationInfo_200002)))
- Walk to Building Z of the Mechanical Engineering Department (see pictures), about 190 m
  
- **Alternative 2:** Take bus number 140 (line information available at: <http://telematics.oasa.gr>)
- Get off at the third bus stop “Polytechnioupoli”, just after the bus turns right ([http://telematics.oasa.gr/en/#stationInfo\\_200080](http://telematics.oasa.gr/en/#stationInfo_200080))
- Cross the streep to the pass through the Kokkinopoulou Gate of the NTUA Campus (see pictures)
- Walk straight and left at the first intersection to reach the “Thyroreio bus stop”. Directions same as before. Total walking distance to Building Z about 600 m
  
- Ticket cost: 1.40 €, valid for 90 minutes. For other ticket alternatives and prices, see here: [http://www.oasa.gr/pdf/en/TICKETS\\_AND\\_TRAVEL\\_CARDS.pdf](http://www.oasa.gr/pdf/en/TICKETS_AND_TRAVEL_CARDS.pdf)
- You can buy tickets either at the automatic vendors of Syntagma or other metro stations.
- Alternatively, you can use the online app “TfA tickets”, available for Android and iOS mobile phones.
  
- For other alternatives (including taxis), check the NTUA webpage here: [http://www.ntua.gr/map\\_en.html](http://www.ntua.gr/map_en.html)
- Use the website above with realtime passenger information from this link: <http://telematics.oasa.gr/en>
  
- **ATTENTION:** the National Technical University of Athens (in Greek “Ethniko Metsovio Politechnio” or “E Mi Pi” for short) campus (in Greek “**Politechnioupoli**”) is located in **Zografou**, out of the Athens city centre. Be careful to avoid confusion with the historic campus of NTUA, which is located downtown.

**242 / 140 bus stop on Katehaki avenue**

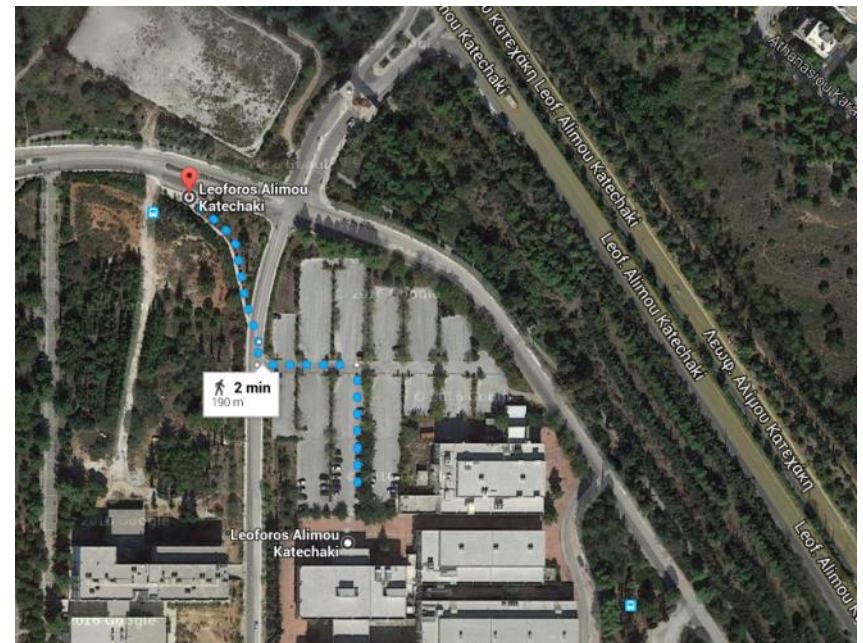




**Building Z (in the back)**

**242 bus stop "Thyroreio"**

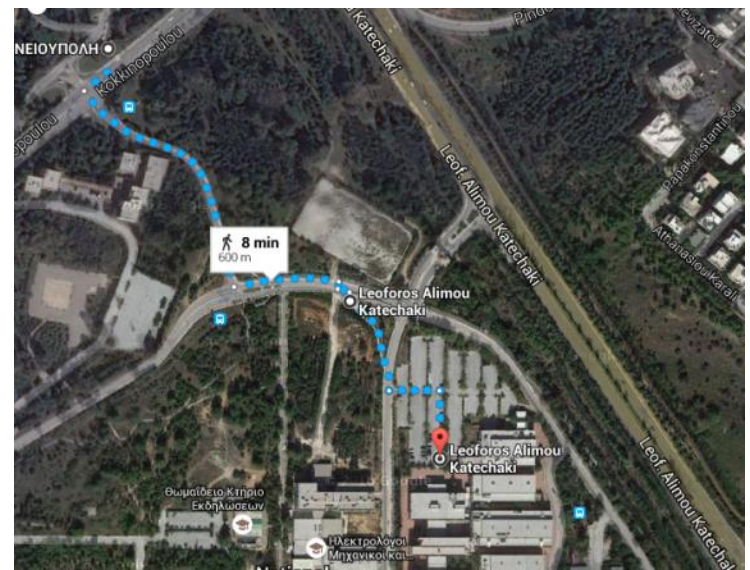
**Alternative 1: 242 bus (leaves you inside the NTUA campus), 190 m of walking**







**Alternative 2: 140 bus (leaves you right outside the NTUA campus), 600 m of walking**



# Map of NTUA Campus

